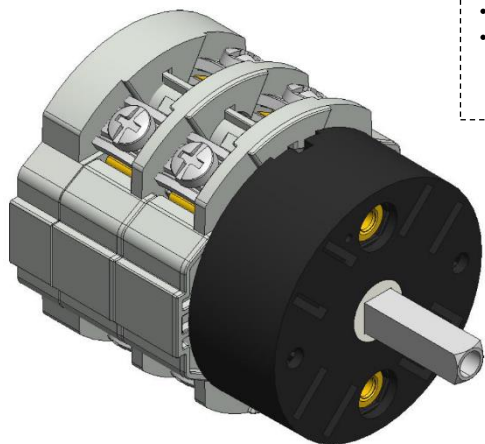


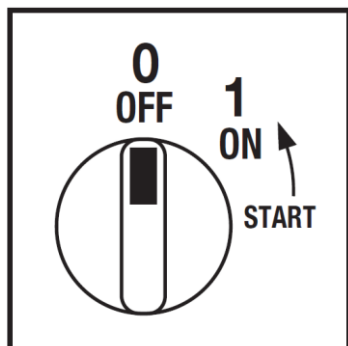
Cod. CA0160031PL2



(Image is purely indicative)



Positions



Standard and Approvals

- Switch according to IEC/EN 60947-3
- Certified UL60947-4-1A and CAN/CSA C22.2 No. 60947-4-1-07
- Suitable as Manual Motor Controller



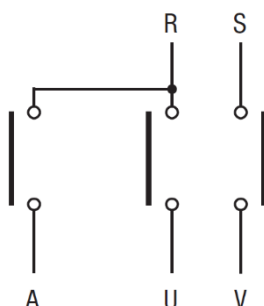
Technical characteristics: Body

- Switch single-phase motor + aux phase
- IP00 Protection degree
- Rated operational current Ie: 16A (AC-21A)
- Rated thermal current Ith: 20A
- Rated insulation voltage Ui: 690V
- Rear mounting
- Fixing with 2 screw at 28mm vertical
- Switching angle: 45°
- Class V2 self-extinguishing thermoplastic housing
- Assembled with metal shaft and threaded stud bolts to ensure maximum operating reliability
- Positive opening double break contacts, silver alloy made.

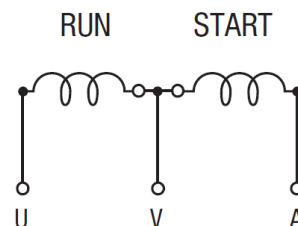
Technical characteristics: Knob

- Transparent plate 75,5x75,5mm and black knob
- Fixing with 2 screws at 28mm vertical
- IP 40 Protection degree

Electrical diagram and function



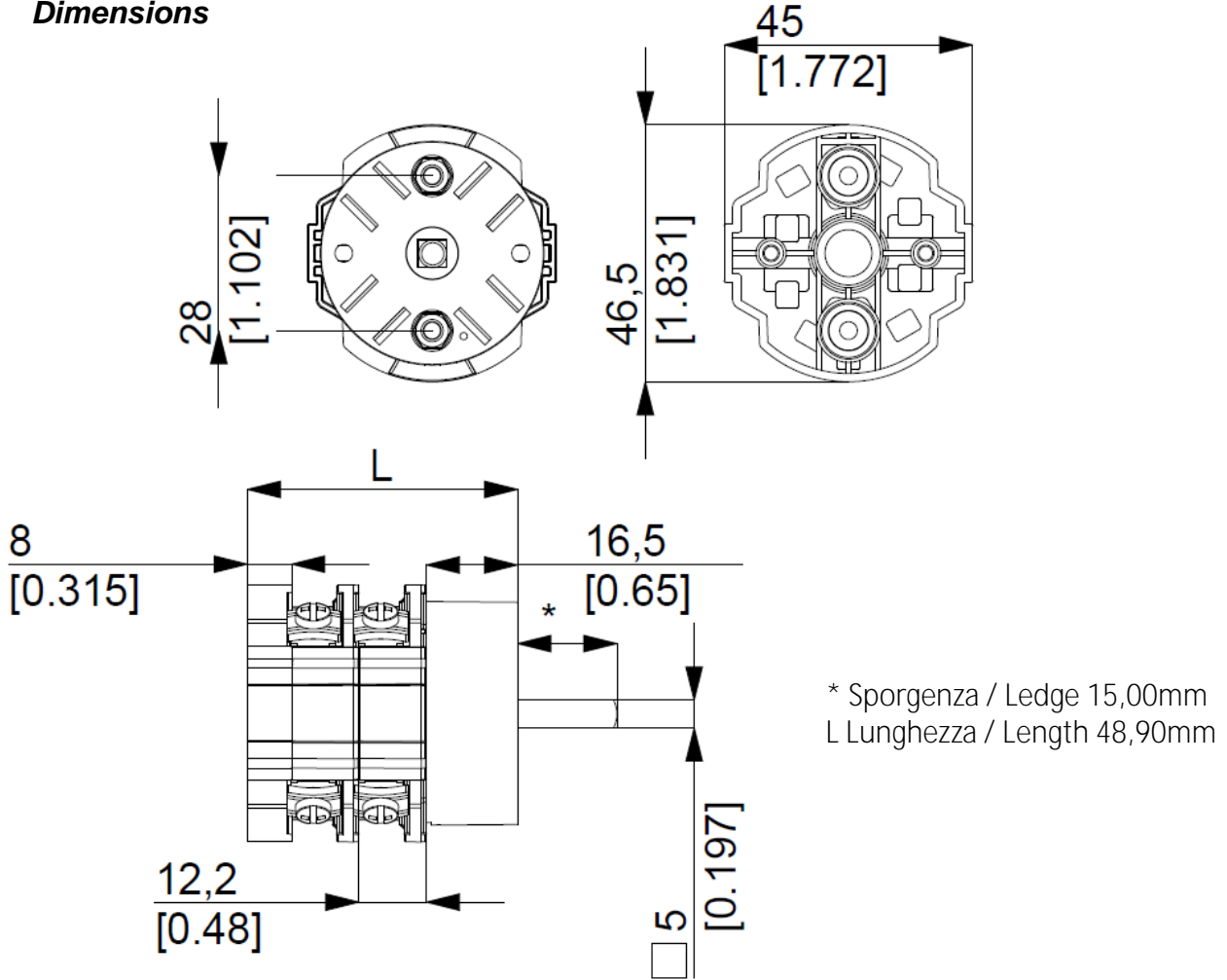
	Avv	X		X	X	CR	45°	
	1			X	X	CA		
	0					CQ		
Contact	1	2	3	4	5	6	7	Angle
Element	1			2				



Cod. CA0160031PL2

measures in mm (in)

Dimensions



Drilling templates

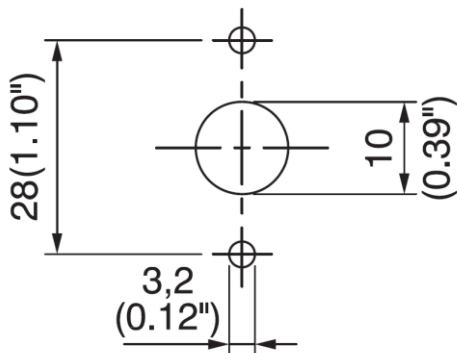


Plate & Knob

