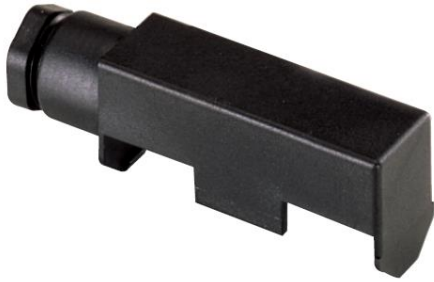


Cod. M3PROTA

Standard and Approvals

- Switch according to IEC/EN 60947-3
- Certified UL60947-4-1A and CAN/CSA C22.2 No. 60947-4-1-07
- Suitable as Manual Motor Controller



Characteristics

- Terminal cover for M3 series
- Weight: 0,195kg

Dimension

